

OLYMPUS

Your Vision, Our Future

*PROFESSIONALISM DEMANDS
INTELLIGENT SOLUTIONS.*

The new Olympus -System.



Lenses and accessories



THE FIRST FULLY DIGITAL

To date digital photography with professional SLR cameras has been a compromise between digital image recording and lenses designed for 35mm film cameras. In the new digital Olympus



Photographer: Joachim Baldauf



Photographer: Jo van den Berg



Photographer: Stefan Schütz

- The Olympus E-System is the first professional SLR system designed completely from scratch for digital photography.
- The lenses are designed specifically for digital technology, thus allowing the image sensor's potential to be fully exploited. As well as this the lenses are smaller, lighter and brighter, making the camera system as a whole more compact, more stable and easier to use.
- Thanks to a unique information exchange system, it is possible for lenses with extreme designs, such as super wide angle, to give information about the lens characteristics such as vignetting and distortion to the body. Based on this information the camera and the application software can compensate each other precisely. This is a valuable feature to overcome the limitations of optical lens designs.

SLR-SYSTEM.

E-System, based on the innovative FourThirds Standard, Olympus has combined its outstanding expertise in the fields of digital photography and optical technology and is setting new standards in the world of professional photography.



Photographer: Joachim Baldauf.*



Photographer: Kanjo Take



Photographer: Jo van den Berg

- The new FourThirds Standard ensures optimum image quality, camera formats and system versatility, and as an open standard offers entirely new opportunities for manufacturers and photographers all over the world.
- The Olympus Global Professional Service is a worldwide organisation offering the professional photographer the very highest standards of reliable and efficient service and support.

* Image featured in Olympus Calendar.

THE IDEAL CONDITIONS FOR A PERFECT SYSTEM.

Photography is currently going through a paradigm change which is still far from complete, but whose direction is clear: digital photography.

A technology like this only has a future if it has been truly tried and tested in all its aspects and redefined in terms of optimum performance. That is what Olympus has done in designing the Olympus E-System based on the FourThirds Standard. The primary goal was to tailor every detail of this system to the demands of professional photography.

The FourThirds Standard uses lenses which are just as powerful as the lenses previously developed for 35mm film camera systems despite being about half the size. Thus the focal length of a 300mm in the FourThirds Standard gives the same angle of view as a 600mm lens for a 35mm film camera.

The benefit: superb image quality but less weight to carry. All lenses feature a near telecentric design that ensures that the light hits the photodiodes at right angles, thus avoiding the problem of blurring at the edges of the image, or corner shading, which often occurs when using lenses originally designed for 35mm film cameras. Combined with the high resolution of the Olympus ZUIKO DIGITAL lenses, this lens design exploits the full potential of the digital camera image sensors. The result is clear photos with strong colours and sharp contrasts right to the edges of the image.

Olympus offers a wide range of interchangeable lenses with apertures from f2.0 upwards, that allow to achieve superb photos even in poor lighting conditions.

Many ZUIKO DIGITAL lenses contain ED glass elements which guide the light directly onto the image sensor, guaranteeing clear pictures with vivid colours and avoiding chromatic aberration.



A new standard focal length

The FourThirds Standard has led to a new standard focal length of approximately 25mm, which is half the focal length of a standard lens (50mm) on a 35mm format camera. This is because the format (diagonal measurement) of the FourThirds image sensor is approximately half the size of the 35mm camera format, and as in all cameras the sensor format diagonal and standard focal length are directly related, the standard focal length of a FourThirds system lens is half that of the 35mm standard.

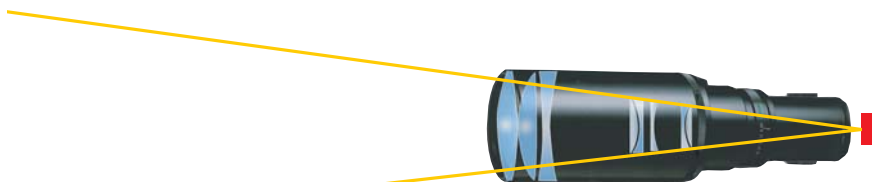
On a FourThirds Format camera, a lens with the standard focal length of 25mm will give an angle of view approximating to the focus area of a human eye (47°). Any lens with a focal length less than 25mm therefore becomes a wide angle and any lens more than 25mm is a telephoto lens.

When comparing the focal lengths of lenses used on the Olympus E-System to those used for 35mm photography, doubling the focal length of the FourThirds lens will give the 35mm equivalent angle of view. It is important to know that this is not a 2x 'crop factor' as quoted by other manufacturers, the lenses on the Olympus E-System are designed for this size format and have a much higher resolution than

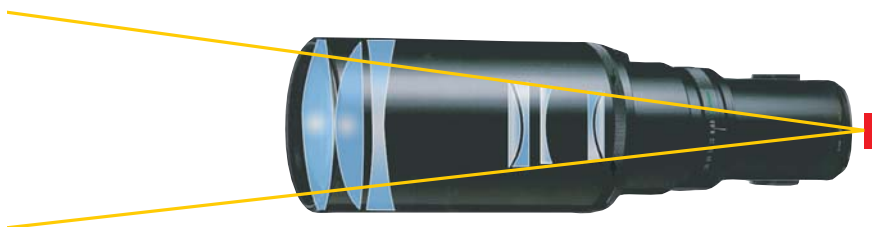
lenses designed generally for 35mm film cameras.

When developing the FourThirds Standard the size of the image sensor and the

standard focal length were deliberately chosen to ensure an optimum combination of image quality, ease of operation, versatility, upgradeability and economy.



FourThirds Format (300mm)



APS Format (400mm)



35mm Film Format (600mm)



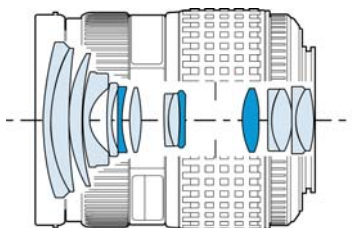
ZUIKO DIGITAL 11-22mm* f2.8-3.5

This bright, 2x wide angle zoom lens has a very low starting focal length of 11mm, giving it wide angle photography options offered by very few lenses used in digital SLR systems. The resulting image quality is superb, because the lens, like all ZUIKO DIGITAL lenses based on the FourThirds Standard, is specifically designed for the image sensor.



ZUIKO DIGITAL 14-54mm*, f2.8-3.5

This is a bright all-round zoom lens offering both wide angle and short telephoto, thus making it the ideal basic lens. The three aspherical lens elements guarantee sharp focus from edge to edge at any focal length, thus maintaining high image quality even in the wide-angle range of the lens. These aspherical lens elements also contribute to the exceptionally compact size of this lens.



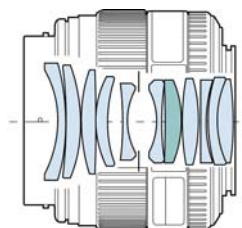
The ZUIKO DIGITAL lens 11-22mm f2.8-3.5 will be available around the end of 2003. Additional information on it will be published shortly at www.olympus-pro.com.

- 4x zoom lens
- 3 aspherical lens elements
- Inner focus with floating mechanism
- Closest focusing distance 0.22m

* 35mm equivalent focal length 22-44mm

ZUIKO DIGITAL ED 50mm*, f2.0 Macro

This lens, designed for macro photography but equally suitable for general use, has a maximum aperture of f2.0 that makes it ideal for available-light photography. This lens is also ideally suited for use with the macro flash system. The lens includes an ED element for sharp, brilliant colour images.

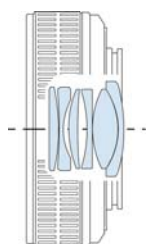
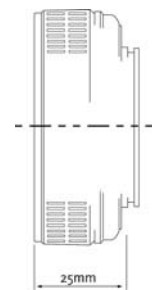


- 1 ED lens element
- Focus with floating mechanism
- Maximum image magnification 1:1.9 (0.52x)
- Closest focusing distance 0.24m

* 35mm equivalent focal length 100mm

Extension Tube EX-25

This increases the distance from the lens to the sensor by 25mm, thus permitting a shorter closest focusing distance than is normally possible with any given lens. With the ZUIKO DIGITAL ED 50mm f2.0 macro lens this extension tube gives a magnification of 1:1, giving the equivalent area coverage as a 1:2 macro lens on a 35mm film camera.

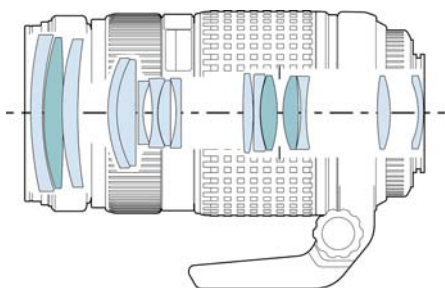


Teleconverter EC-14

Placed between body and lens, this teleconverter increases the focal length of the lens by a factor of 1.4. Thus the 300mm lens becomes a 420mm lens, or a 35mm equivalent focal length of 840mm. With the loss of one f-number, the 420mm focal length still delivers outstanding brightness of f4.0.

ZUIKO DIGITAL ED 50-200mm*, f2.8-3.5

This top-class professional telephoto zoom lens is one of the lightest and most compact of its kind, and it also has excellent light-gathering power. It consists of 16 elements including three ED elements.

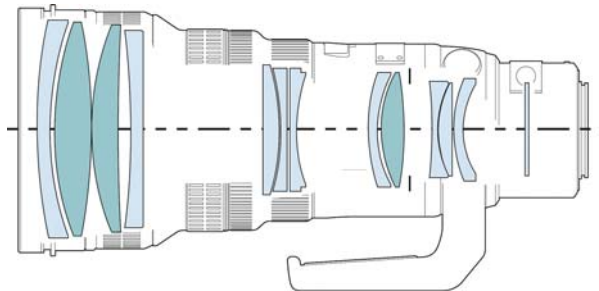


- 4x zoom lens
- 3 ED lens elements
- Inner focus
- Closest focusing distance 1.2m

* 35mm equivalent focal length 100mm-400mm

ZUIKO DIGITAL ED 300mm*, f2.8

The 300mm lens is ideal for sports and nature photography. It is an extremely bright but compact lens making it easy to use. Even so, it has the equivalent performance of a 600mm f2.8 lens on a 35mm film camera, despite being approximately half the size. The three high-performance ED elements deliver superb sharpness.



- 3 ED lens elements
- Inner focus with floating mechanism
- Focus range limiter for faster focussing
- Drop-in filter system
- Closest focusing distance 2m
- 9 blades

* 35mm equivalent focal length 600mm

The 300mm lens comes with a range of accessories including filter equipment.

The DFH-43 filter holder will carry the following filters:



DFH-43 filter holder



ND8-43 grey filter



ND4-43 grey filter



SCF-43 clear filter



The DPF-43 filter holder carries the polarisation filter.

■ ED Glass Element
■ Aspherical Element



To ensure maximum versatility, a wide range of flash units and accessories specially designed for use with digital cameras are available for the Olympus E-System.

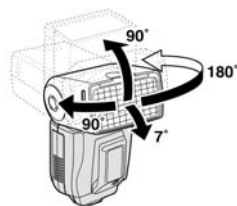
Electronic flash FL-50

The powerful electronic FL-50 flash unit has been specially developed for use with digital cameras. A variety of adjustment options, high-speed synchronisation and a wide range of accessories make the FL-50 flash unit the ideal tool for every Olympus E-1 user.

It offers GN (Guide Number) 50 at a focal length of 42mm (equivalent to 85mm on a 35mm film camera; ISO 100), and GN 28 at a focal length of 12mm (equivalent to 24mm on a 35mm film camera; ISO 100).

Features:

- Option of TTL-Auto, auto and manual modes.
- Bounce and swivel head.
- As well as supporting the camera's normal synchronisation speed of 1/180s, the FL-50 flash unit features the special Olympus Super FP Flash Mode thus giving the wider creative photographic possibilities. The Super FP Flash Mode activates the flash from the instant the shutter opens until it closes again, allowing the flash to be used even at the highest shutter speeds. Thus the Olympus E-1 permits flash synchronisation at all shutter speeds right down to 1/4000s.
- The flash reflector adjusts automatically in several steps during lens zooming to match the flash coverage to the lens angle of view.



- The flash unit has an AF assist illuminator that extends the range of the camera's focus assist illuminator from 7 to 10 metres.
- With the Olympus E-1, the photographer can adjust the flash intensity in 1/3 EV steps, and it also offers features such as red-eye reduction, slow synchronisation and second curtain synchronisation.
- There are several power supply options for the FL-50 flash unit: AA batteries, the LB-01 lithium battery, the FP-1 flash power grip for extra performance and the SHV-1 high voltage pack with an additional powerful battery.

Ring flash

The ring flash RF-11 and ring flash set SRF11 (containing the FC-1 macro flash controller and the RF-11 ring flash) are available by the end of 2003.



Twin flash

The twin flash TF-22 and the twin flash set STF-22 (containing the FC-1 macro flash controller and TF-22 twin flash) are available by the end of 2003.



Macro flash controller

The macro flash controller FC-1 attaches to the Olympus E-1 digital SLR's hot shoe to control the ring flash RF-11 and twin flash TF-22.



Flash power grip for the FL-50 (including hot shoe cable)

This flash power grip FP-1, designed for the FL-50 flash unit, can be used with the flash unit's integrated power supply to enable more shots to be taken and to decrease the flash recycle time.



Flash high voltage set

The Flash High Voltage Set SHV1 contains a high voltage pack (HV-1) with charging function, a nickel-hydrate battery pack (BN-1) and an AC adapter (AC-2) for charging the battery.



Ni-MH battery pack

The nickel-hydrate battery BN-1 for use with the FL-50 electronic flash unit. It provides power for over 250 flashes and a flash recycle time of less than 1.3 seconds when used with the FL-50.



Remote grip cable

The remote grip cable RG-1 connects the Olympus E-1 to the FP-1 flash power grip, allowing shutter release using the button provided on the FP-1.



Flash cable

The flash cable FL-CB02 connects the Olympus E-1 (from the hot shoe) to the FP-1 flash power grip.



Flash cable (hot shoe to hot shoe)

The flash cable FL-CB05 for use with FL-50 when not attached directly to the camera's hot shoe.



Flash adapter ring

The flash adapter ring FR-1 allows the ring or twin flash to be attached to the ZUIKO DIGITAL 50mm f2.0 macro lens.



Flash units FL-40 and FL-20

As well as the FL-50 flash unit, the FL-40 flash unit (with GN 40 for telephoto zoom and GN 26 for wide angle) and also the even smaller FL-20 flash unit is fitting with the Olympus E-1.



Apart from lenses and flash system components, a wide variety of accessories are available for use with the Olympus E-System, including batteries, chargers, focusing screens and software.

Lithium-ion battery pack BLM-1

- 1500 mAh rechargeable lithium-ion battery

(Included with the Olympus E-1)



Lithium-ion battery charger BCM-1

- 100-240V AC adapter can be used internationally.

(Included with the Olympus E-1)



Power battery set SHLD-2

- High-capacity BLL-1 lithium-ion battery
- BCL-1 lithium-ion battery charger
- HLD-2 power battery holder



Power battery holder HLD-2

- For the high-capacity BLL-1 lithium-ion battery
- Features shutter button, main and subdials, AEL button and AF frame selector for easy photography when rotating the camera 90° for portrait shots.



Battery pack BLL-1

- High-capacity 3400 mAh lithium-ion battery
- For the HLD-2 power battery holder



Battery charger BCL-1

- Specially suitable for the BLL-1 lithium-ion battery
- Two-hour recharging time for the BLL-1 lithium-ion battery
- 100-240V AC adapter can be used internationally.



AC adapter AC-1

- 9V AC-Adapter specially designed for the Olympus E-1 body.
- Can be used internationally (100-240V)



Focussing screens FS-1/2

User changeable focussing screens, the FS-1 for general photography (supplied with the Olympus E-1) and the FS-2, which has a grid pattern for precision framing.



Eyecups EP-1/2

While the Olympus E-1 is supplied with the eyecup EP-1, this can be easily replaced with the deeper eyecup EP-2 which gives better protection when using the camera in strong backlight conditions.



Grip strap GS-2

For use with the HLD-2 power battery holder (supplied with HLD-2)



Remote control RM-1

The RM-1 remote control permits cable-free camera shutter release via an infrared signal.

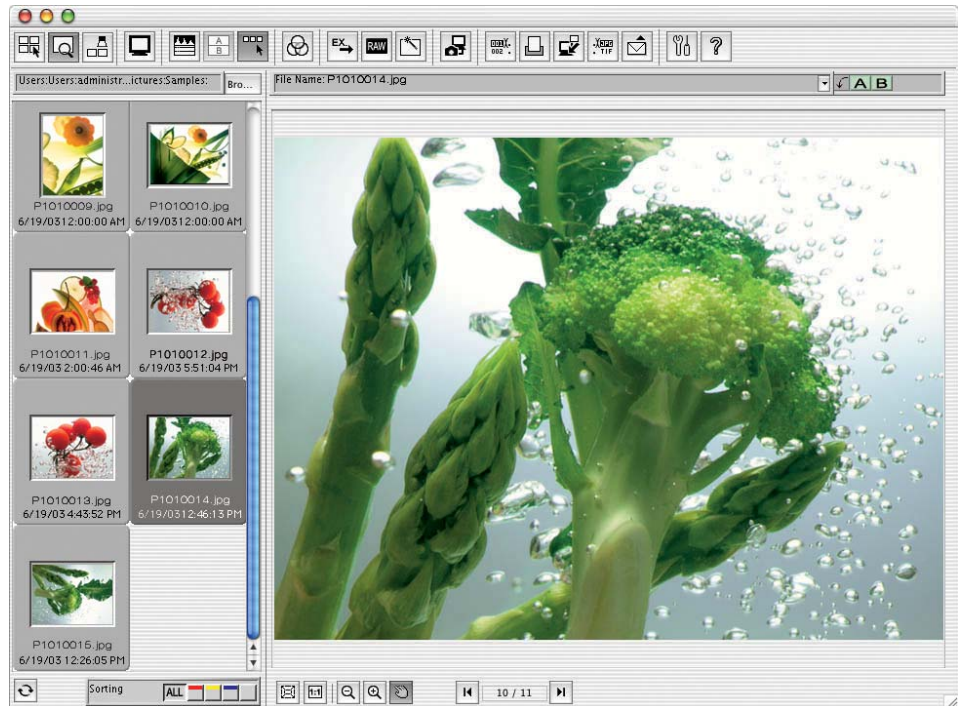


Remote control cable RM-CB1

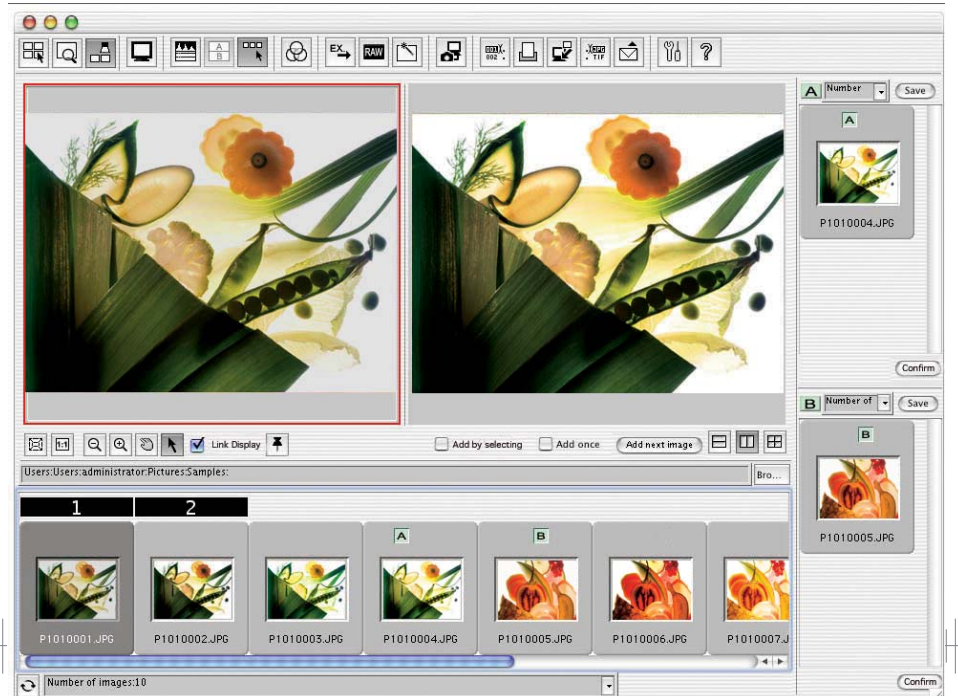


Olympus Viewer Software

Olympus Viewer Software for downloading, browsing, evaluating, organising and printing out the images. The easy-to-use graphic interface and its many features ensure efficient workflow at all times. Highlights include the virtual light box, a tool which functions almost like a real light box for checking film, allowing images to be viewed and selected on PC before grouping and editing them. With the RAW file processing function included in this software the user can select the desired RAW files quickly and easily and can then convert them into TIFF, JPEG or other formats as desired. This software comes as standard with the Olympus E-1.



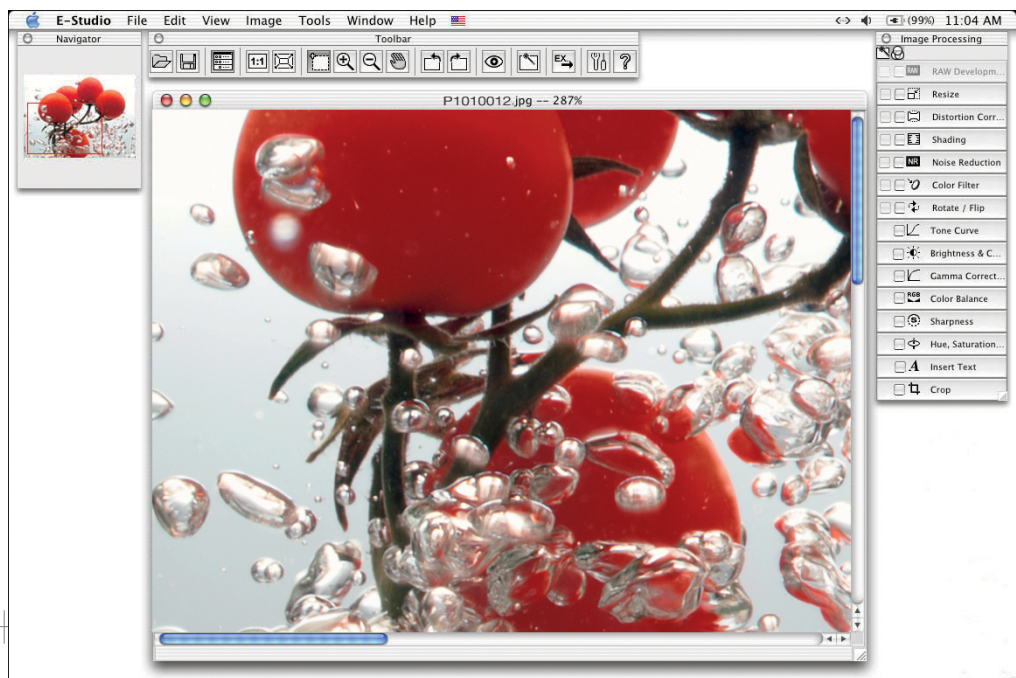
Olympus Viewer Software: Viewing enlarged images



Olympus Viewer Software: Lightbox function comparing images (up to 4 images possible)



Olympus Studio Software: Camera Control from the computer



Olympus Studio Software: Image editing tool

Olympus Studio 1.0 Software

The Olympus Studio 1.0 Software is the perfect answer to the demands of professional photographers. It extends the Olympus Viewer Software and provides various functions for a fast and efficient workflow.

Camera control from the computer

If the camera is connected to the computer (PC or Mac) the recorded images can be stored directly onto the hard drive. The photographer can choose to control the camera either directly, or remotely from the computer.

Image editing with batch processing

The image editing mode includes many key editing functions like tone curve and gamma correction. Batch processing allows you to quickly and easily enhance the quality of all shots taken in a session. Editing operations such as distortion correction and noise reduction can be automatically corrected simultaneously.

High-speed RAW file processing

Selecting the high-speed RAW development function permits extremely rapid saving of RAW files in TIFF or JPEG format.

High-function RAW file processing

Selecting the high-function RAW development function permits even higher quality while saving RAW files in TIFF or JPEG.

Specifications

ZUIKO DIGITAL 14–54mm f2.8-3.5

Focal length	14mm - 54mm zoom
35mm equivalent focal length	28mm - 108mm
Construction	
Lens	15 elements in 11 groups, including 3 aspherical lens elements
Mechanism	Inner focus with floating mechanism
Angle of view	75 to 23 degrees
Closest focusing distance	0.22m
Maximum image magnification	0.26x
35mm equivalent magnification	0.52x
Aperture	
Number of blades	7
Maximum aperture	f2.8 wide - f3.5 telephoto
Minimum aperture	f22
Filter size	67mm
Size / weight	
Dimensions	73.5 (Diameter) x 87.5mm (Length)
Weight	435g
Compatibility	
Tele converter EC-14	Yes
Extension tube EX-25	Extended maximum image magnification: 0.65x
Lens hood	LH-70
Lens cap	LC-67 (67mm)
Lens case	LSC-0816
Box contents	Lens hood (LH-70), lens case (LSC-0816), lens cap (LC-67), lens rear cap (LR-1), manual, warranty card

ZUIKO DIGITAL ED50mm f2.0 Macro

Focal length	50mm
35mm equivalent focal length	100mm
Construction	
Lens	11 elements in 10 groups, including 1 ED lens element
Mechanism	Floating focusing mechanism
Angle of view	24 degrees
Closest focusing distance	0.24m
Maximum image magnification	0.52x
35mm equivalent magnification	1.04x
Aperture	
Number of blades	7
Maximum aperture	f2.0
Minimum aperture	f22
Filter size	52mm
Size / weight	
Dimensions	71 (Diameter) x 61.5mm (Length)
Weight	300g
Compatibility	
Tele converter EC-14	No
Extension tube EX-25	Extended maximum image magnification: 0.98x
Lens hood	LH-55
Lens cap	LC-52 (52mm)
Lens case	LSC-0814
Box contents	Lens hood (LH-55), lens case (LSC-0814), lens cap (LC-52), lens rear cap (LR-1), manual, warranty card

ZUIKO DIGITAL ED50–200mm f2.8-3.5

Focal length	50mm - 200mm
35mm equivalent focal length	100mm - 400mm
Construction	
Lens	16 elements in 15 groups, including 3 ED lens elements
Mechanism	Inner focus
Angle of view	24 to 6 degrees
Closest focusing distance	1.2m
Maximum image magnification	0.21x
35mm equivalent magnification	0.42x
Aperture	
Number of blades	9
Maximum aperture	f2.8 wide - f3.5 telephoto
Minimum aperture	f22
Filter size	67mm
Size / weight	
Dimensions	87 (Diameter) x 157mm (Length)
Weight	1070g with tripod adapter
Compatibility	
Tele converter EC-14	Yes
Extension tube EX-25	Extended maximum image magnification: 0.49x
Lens hood	LH-70B
Lens cap	LC-67 (67mm)
Lens case	LSC-1220
Box contents	Lens hood (LH-70B), lens case (LSC-1220), tripod adapter (TRA-72), lens cap (LC-67), lens rear cap (LR-1), manual, warranty card

ZUIKO DIGITAL ED300mm f2.8

Focal length	300mm
35mm equivalent focal length	600mm
Construction	
Lens	13 elements in 11 groups, including 3 ED lens elements and 1 filter holder
Mechanism	Inner focus with floating mechanism
Angle of view	4.2 degrees
Closest focusing distance	2m
Maximum image magnification	0.15x
35mm equivalent magnification	0.3x
Aperture	
Number of blades	9
Maximum aperture	f2.8
Minimum aperture	f22
Filter size	Exclusive drop in filter 43mm (supplied)
Size / weight	
Dimensions	129 (Diameter) x 281mm (Length)
Weight	3290g with tripod adapter
Compatibility	
Tele converter EC-14	Yes
Extension tube EX-25	Extended maximum image magnification: 0.25x
Lens hood	LH-120
Lens cap	LC-140 (140mm)
Lens case	LS-1738
Box contents	Lens hood (LH-120), tripod adapter, drop in folder set (filter folder DFH-43, ND filter ND4-43, ND filter ND8-43, clear filter SCF-43, PL filter DPF-43), lens case (LS-1SH), lens shoulder strap (LSS-1), lens cap (LC-140), lens rear cap (LR-1), manual, warranty card

Tele Converter EC-14

Magnification	1.4x
Lens construction	6 elements in 5 groups
Size / weight	
Dimensions	68 (Diameter) x 22.4mm (Length)
Weight	170g
Lens case	LSC-0710
Box contents	Lens case (LSC-0710), body cap (BC-1), lens rear cap (LR-1), manual, warranty card

Extension Tube EX-25

Extended length	25mm
Size / weight	
Dimensions	68 (Diameter) x 25mm (Length)
Weight	170g
Lens case	LSC-0710
Box contents	Lens case (LSC-0710), body cap (BC-1), lens rear cap (LR-1), manual, warranty card

Electronic Flash FL-50

Guide number	Automatic switching from 50 at 42mm to 28 at 12mm
Firing angle	Automatic switching At 12mm: Up-down 61 deg., left-right 78 deg At 42mm: Up-down 21 deg., left-right 28 deg When the wide panel is used for 8mm
Flash modes	TTL AUTO, AUTO, MANUAL, FP TTL AUTO, FP MANUAL
Bounce angles	Up to 90 deg., down 7 deg., left 0 to 90 deg., right 0 to 180 deg.
Power supply	AA (R6) alkaline batteries x 4 AA (R6) lithium batteries x 4 AA (R6) Ni-Mn batteries x 4 3V lithium battery pack (LB-01) x 2 AA (R6) Ni-Cd batteries (1000mAh) x 4 AA (R6) Ni-MH batteries (1900mAh) x 4
Dimensions	78mm W x 133mm H x 102mm D (protrusions not included)
Weight	380g (without batteries)
Box contents	Soft case, manual, warranty card

Specifications are subject to change without any notice or obligation on the part of the manufacturer.

OLYMPUS -SYSTEM



Specifications and appearances are subject to change without any notice or obligation on the part of the manufacturer.



OLYMPUS

Your Vision, Our Future

OLYMPUS EUROPA GMBH

www.olympus-pro.com
www.olympus-europa.com